



# MONTHLY MEMBERSHIP PROGRESS REPORT

District 110CO

Results as of: 2/28/2015

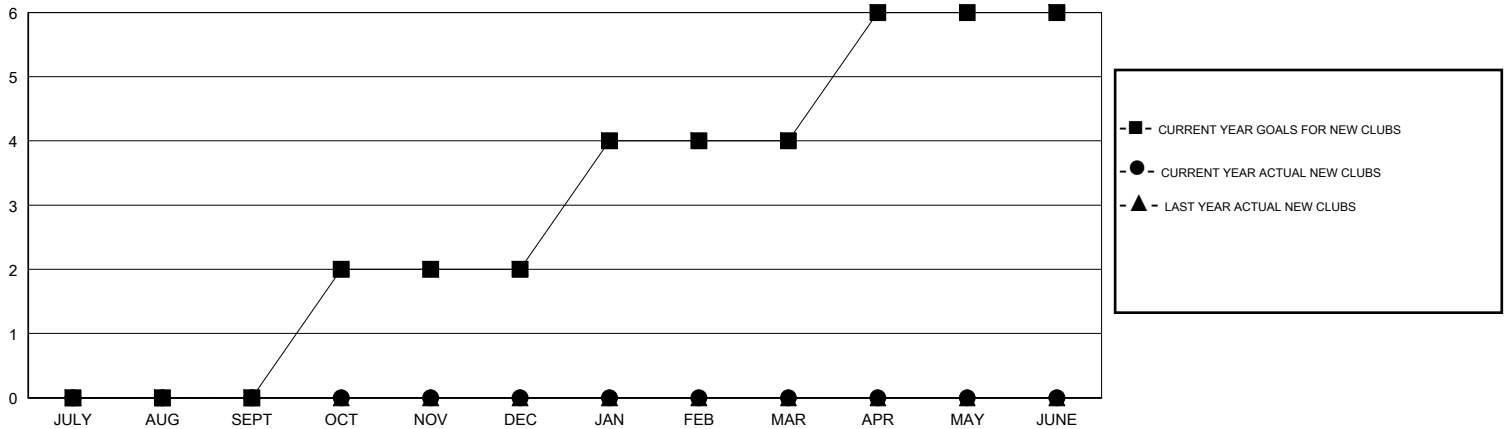
GMT: Elisabeth Haderer

LOCATION NETHERLANDS

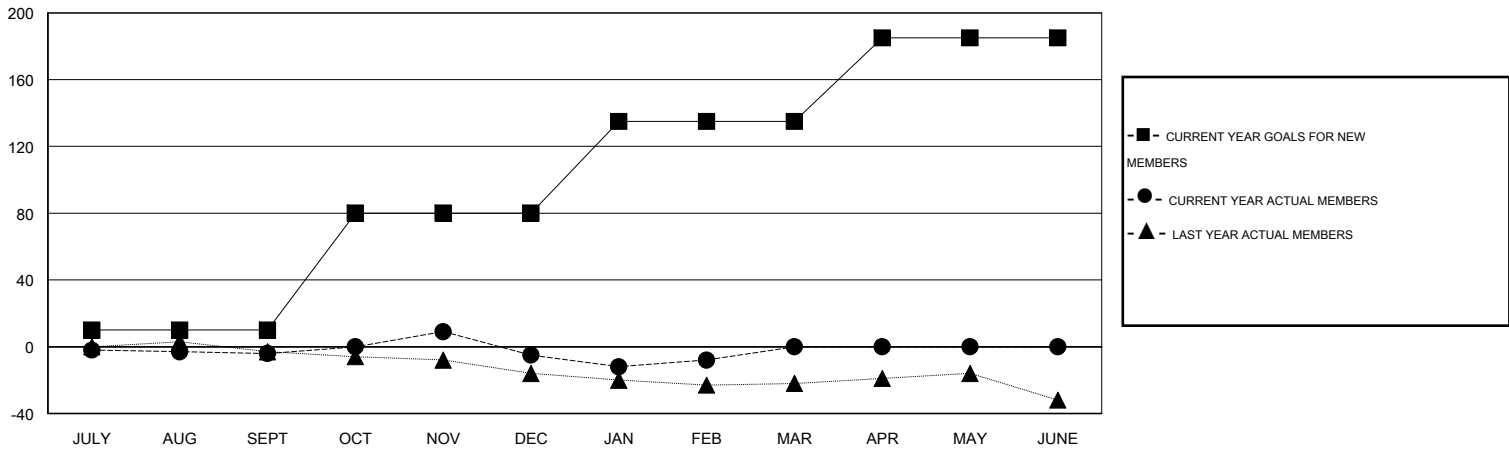
GMT CA 4

| Clubs                 |               |           |               |               | Members               |                 |                               |                 |               |
|-----------------------|---------------|-----------|---------------|---------------|-----------------------|-----------------|-------------------------------|-----------------|---------------|
| RESULTS FOR 2014-2015 |               |           |               |               | RESULTS FOR 2014-2015 |                 |                               |                 |               |
| QUARTER               | NEW CLUB GOAL | NEW CLUBS | DROPPED CLUBS | NET GAIN/LOSS | QUARTER               | NEW MEMBER GOAL | CHARTER AND NEW MEMBERS ADDED | DROPPED MEMBERS | NET GAIN/LOSS |
| JULY/AUG/SEPT         | 0             | 0         | 0             | 0             | JULY/AUG/SEPT         | 10              | 7                             | 11              | -4            |
| OCT/NOV/DEC           | 2             | 0         | 0             | 0             | OCT/NOV/DEC           | 70              | 35                            | 36              | -1            |
| JAN/FEB/MAR           | 2             | 0         | 0             | 0             | JAN/FEB/MAR           | 55              | 19                            | 22              | -3            |
| APR/MAY/JUNE          | 2             | 0         | 0             | 0             | APR/MAY/JUNE          | 50              | 0                             | 0               | 0             |

GOALS AND ACTUAL NEW CLUBS CUMULATIVE



GOALS AND ACTUAL MEMBERS CUMULATIVE



|                        |  |   |                |                     |    |
|------------------------|--|---|----------------|---------------------|----|
| DROPPED CLUBS: 0       | 34 CLUBS OF 76 ADDED 1 OR MORE NEW MEMBERS | <u>GENDER DISTRIBUTION</u>                            |                |                     |    |
| <u>DROPPED MEMBERS</u> |  | MALE  | 1,802 (87.48%) |                     |    |
| DECEASED               | 3  | FEMALE  | 258 (12.52%)   |                     |    |
| CLUB CANCELLED         | 0  | <a href="#">CLICK HERE FOR HEALTH ASSESSMENT DATA</a> |                |                     |    |
| OTHER                  | 66   |   |                | FAMILY UNIT MEMBERS | 10 |
| TOTAL                  | 69   |   |                | HEAD OF HOUSEHOLD   | 5  |
|                        |  | NON-HEAD OF HOUSEHOLD                                 | 5              |                     |    |